

# ENTERPRISE FOR TECHNOLOGY

PREMIUM PRODUCTS AND SERVICES  
SINCE 1859



PORT & MARINE



ENERGY & ENVIRONMENT



MINING PROCESSING



# Milestones

Over 150 years, the product range of Ilmarine and its predecessors has included all sorts of metal products, from assembled Caterpillar bulldozers to equipment for oil shale processing plants.

established **1859**

Friedrich Wiegand established a mechanical workshop. The factory started to produce equipment for distilleries, water mills, steam engines, equipment and furnishings for factories, and agricultural machines.



brand name **1920**

Leaders of the Republic of Estonia gave the brand name ILMARINE to the factory. The assembly of Caterpillar and Bitwargen machines was launched. By 1933, the factory was manufacturing industrial equipment, locomotives, carriages, and engineering structures.



specialisation **1952**

The factory was reorganised, specialising in the manufacturing of auxiliary devices for power station boilers. Ilmarine developed oil/gas combined burners, burners with rotary sprayers, liquid fuel sprayers, and other devices.



diversification **1994**

The production portfolio was diversified following the company's privatisation. The production of marine constructions has been added. In 2008 Ilmarine launched an extensive engineering program, supported by the Estonian Development Fund and strategic investors.



# At a Glance



Ilmarine is a one-stop shopping centre of **intelligent metalworking** solutions. The enterprise has been dedicated to supplying industries with premium products and services since 1859.

The company focuses on three major market segments

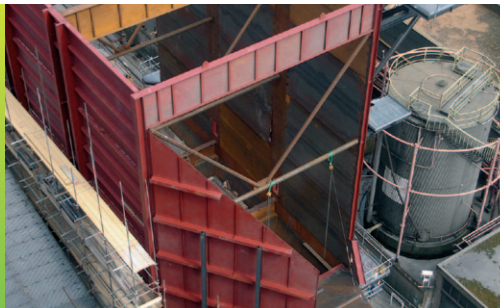
PORT & MARINE

- Ramps, linkspans, bridges
- Gangways, walkways
- Staircases
- Towers
- Auxiliary equipment
- Superstructures



ENERGY & ENVIRONMENT

- Ducts, channels
- Stairs, platforms
- Panels, hoppers
- Supports, beams
- Engineering structures



MINING & PROCESSING

- Conveyors
- Elevators
- Frames
- Heavy-duty items

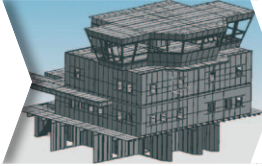


# Services

## Project Management

Via an effective Supply Network we provide a unique mix of facilities, equipment and knowledge, which allows us to execute various types of projects that involve:

### Design



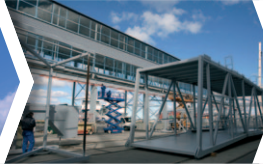
### Production



### Installations



### Construction



### Maintenance



## Engineering

We have skills and tools to undertake complex tasks:

- design and 3D visualisation of complex structures and assemblies
- modelling of hulls, appendages and superstructures
- design of piping, electrical systems and HVAC
- hydrostatic and damage stability calculations
- finite element analysis
- experimental testing of structures and materials

## Manufacturing

### Prefabrication

- Gas, plasma, water, laser cutting
- Bending and rolling

### Welding and assembly

- Complex constructions
- Steels, aluminium, stainless and special steels
- Post-welding thermal treatment

### Mechanical treatment

- Milling
- Boring
- Turning

### Surface treatment

- Shotblasting and spray painting
- Hot-dip galvanizing

