



Sophisticated metal products
and related turn-key solutions
of high quality





SCANDINAVIA IS OUR NUMBER ONE CHALLENGE

Taking the best of our experience...

Ilmarine will be celebrating its 150th anniversary next year. It has come a long way, from a coppersmith's shop to the production of sophisticated metal structures. The company has been through different times: good times, when the name of Ilmarine was known all over the republic; and bad times, when the company stood on the verge of collapse.

Two years ago a young director got the unique chance and also challenge to breathe new life into the company. And today I am proud of the people with whom I have had the honour to work. I am extremely grateful to them for the support and trust they have given me.

...we are meeting the demands of the current market...

Our common goal is to restore the glory that the brand once enjoyed. Together we



have implemented a modern production control system and developed a new and bold marketing strategy.

Engineering structures, aluminium and stainless steel products have been introduced into our manufacturing portfolio. And what is even more important, Ilmarine has begun to offer integrated complex solutions from design to fabrication and outfitting. In 2007 and 2008 we have launched a number of very interesting projects at the Port of Tallinn.

This includes renovation work and the building of gangways, walkways, ramps and a link-span. Invitations to participate in large-scale building projects, like the reconstruction of an oil-shale factory, are evidence of the recognition we have received in the field of project management.

...and planning for the future

Scandinavia is the next significant challenge for us. In 2008, Ilmarine is preparing to enter the markets of Denmark, Norway and Sweden. This decision was mostly based on the results of market surveys and a positive experience gained from co-operation with Finnish enterprises that serve pulp&paper and wood processing industries. According to our vision, the following areas have promising prospects: aluminium constructions and spare parts; equipment for oil rigs; shipbuilding structures; material handling and lifting equipment; port equipment.

Karel Saar
managing director

Evolution of products and services

Over the last 150 years the product range of our factory has included all sorts of metal products, from kitchen stoves to equipment for oil shale processing plants.

1859 - equipment for Estonian distilleries	1900 - well-known Russ oil engines	1920 - stone crushing and road building machines, road graders and equipment for oil-shale and phosphorite factories, other machine engineering products	1941 - repair of equipment and machinery	1952 - auxiliary devices for power station steam shops	2006 - engineering structures, aluminium and stainless steel constructions, shipbuilding elements, heavy machinery; project management
1861 - equipment for water mills, steam engines, equipment and furnishing for factories, threshing machines and other agricultural equipment	1912 - steam engines, equipment for sugar factories, pumps, bridge structures	1930 - central heating radiators, details for engines and locomotives, carriage wheels, petrol stations, load-bearing structures for bridges, bullet shells	1945 - production of equipment for the oil-shale industry, agricultural machinery	1994 - equipment for power stations, metal constructions	

1859 1900 1920 1940 1950 2000

DEMAND FOR PRODUCTION TO BE MET

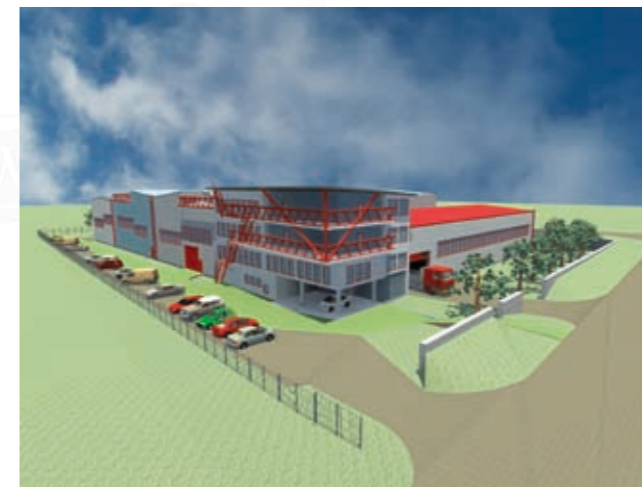


To meet the demand for production Ilmarine has begun to build a new factory in Maardu Industrial Park. The operations of the new premises will be launched in autumn 2009. The contemporary facilities allow for the manufacturing of details to a maximum weight of 40 tons, a length of 35 metres

and a width and height of 7 metres.

The extended range of production facilities includes all of the tools needed from a gas and plasma cutting machine to a CNC milling centre. The total area of the premises is 5100 m², 350 m² of which is used

by the mechanical processing department. The total area of the shotblasting chamber and painting hall is 860 m². Aluminium structures are manufactured in premises specially fitted for the purpose and have an area of 360 m².



OPPORTUNITIES

- » 10250 m² site for workshop and utilities
- » max dimensions of manufactured sections 7 x 7 x 35 m
- » 40 t lifting capacity
- » 360 m² for aluminium workshop
- » 350 m² for mechanical treatment hall
- » CNC cross type milling machine x = 4 m, y = 2 m, z = 1.2 m
- » 860 m² for semiautomatic shotblasting room and painting hall



PROJECTS IN PORT OF TALLINN 2007-2008



LINKSPAN

Weight: 300 t

Description: for a traffic flow on and off a RoRo vessel; the weight of access ramp is 70 t; the ramp is remotely controlled by means of a radio



ONE-LEVEL GANGWAYS

Weight: 35 t

Height: 19.5 m

Description: moves on railroad, operates in vertical direction; aluminium drawbridge



STAIRCASE

Height: 12 m

Description: 2 levels; lift for people with disabilities, aluminium drawbridge

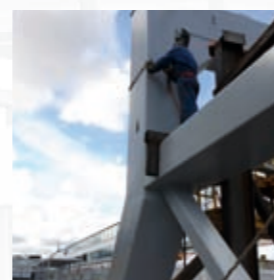
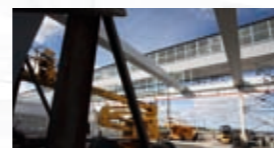


DOUBLE-LEVEL GANGWAYS

Weight: 70 t

Height: 19.5 m

Description: moves on railroad at a speed of 8 m/minute; operates in vertical direction, loading amplitude 6 - 13.5 m; aluminium drawbridge



DOUBLE-LEVEL WALKWAY

Weight of steel construction: 286 t

Length: 300 m

Description: 2 levels, emergency exit, spiral staircase





DESIGN AND ENGINEERING

Design services are offered in co-operation with an engineering office. The team consists of qualified professionals from M.Sc to Dr.Tech.

Marine design and engineering

- » conceptual design
- » general arrangement
- » structural design
- » ship design

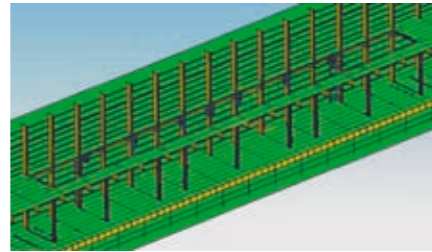
Complex metal structures

- » RoRo ramps
- » floating structures

- » various engineering structures

Calculations and analysis

- » finite element services ranging from simple elastic analysis to complex calculations involving large deformations together with failure of the structure
- » linear stress-strain analysis of large structural components



DESIGN AND INSTALLATION OF CONTROL SYSTEMS AND AUTOMATICS



As part of our integrated solution we offer the design, installation and updating of control systems. Our technical staff members have experience in the updating and construction of press equipment, the hydraulic and pneumatic equipment of vessels, industrial automated lines.

The best possible results are achieved in co-operation with the leading suppliers of different components and solutions. We work with Siemens, Rexroth, Saia-Burgess, SMC.

MANUFACTURING CAPACITIES AND THE PRODUCT RANGE



Ilmarine offers all types of metal processing services, ranging from preparing the metals up to certified welding works and painting.

The production facilities are today located in a production building at Mustamäe tee 5, where sections with a maximum weight of 20 tons can be produced. Larger structures can be assembled outside production premises, at the harbour or on construction sites.

Our workshop is specialized in the manufacturing of engineering structures, aluminium constructions and spare parts, shipbuilding elements and heavy machinery.

CAPACITIES TODAY

- » 5000 m² of workshop area,
- » 4.5 x 5.5 m doors
- » 8 cranes with 10 t lifting capacity each, forklift
- » 300 m² for equipped aluminium workshop
- » CNC gas and plasma cutting machine
- » bending press, roll
- » guillotine, NC band saw
- » boring mills, various lathes for mechanical treatment
- » MIG/MAG, TIG welding, impulse welding
- » shotblasting room 5 x 17 m, h = 3.5 m
- » painting area 650 m²

Engineering Structures

subcontracting and project management



Aluminium Production

subcontracting



Shipbuilding Elements

subcontracting



Machinery

subcontracting and project management





GENERAL INFORMATION

CAPACITIES

Current

- » 5000 m² of workshop area
- » 4.5 x 5.5 m doors
- » 8 cranes with 10 t lifting capacity each, forklift
- » 300 m² for equipped aluminium workshop
- » CNC gas and plasma cutting machine
- » bending press, roll
- » guillotine, NC band saw
- » boring mills, various lathes for mechanical treatment
- » MIG/MAG, TIG welding, impulse welding
- » shotblasting room 5 x 17 m, h = 3.5 m
- » painting area 650 m²

Extended, year 2009

- » 10250 m² site for workshop and utilities
- » max dimensions of manufactured sections 7 x 7 x 35 m
- » 40 t lifting capacity
- » 360 m² for aluminium workshop
- » 350 m² for mechanical treatment hall
- » CNC cross type milling machine x = 4 m, y = 2 m, z = 1.2 m
- » 860 m² for semiautomatic shotblasting room and painting hall

PRODUCT RANGE

- » passenger galleries and walkways
- » gangways
- » RoRo ramps
- » foundations
- » ship blocks
- » floating structures
- » aluminium deck-houses
- » aluminium bus body parts
- » aluminium constructions
- » conveyors, lines
- » pulp and paper machinery
- » various heavy machinery
- » various engineering structures

Transportation frame, Norway



Vessel ramp, Sweden



Aluminium deckhouses, Finland



TALLINN



Paper roll elevator, Finland



Foundations, Denmark



Dumper for crushing machine, Norway



Bus body parts, Poland

Ilmarine AS

Mustamäe tee 5

10616 Tallinn, Estonia

Tel.: + 372 6 117 131

Fax: + 372 6 117 130

Web: www.ilmarine.ee